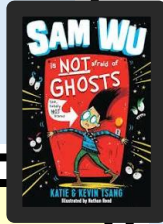


Reading

This term will read the book 'Sam Wu is not afraid of Ghosts' by Kevin Tsang. After an unfortunate incident in the Space Museum, Sam goes on a mission to prove to the school bully, and all his friends, that he's not afraid of anything and he is as brave as a superhero!



Homework

This term's theme for our homework grid is **Maths Mastery Mission!** Please aim to complete at least four activities across the term. Reading diaries will be checked on **Wednesday**. Ensure at least 4 entries per week.

PE: Unit and Days

PE is on a Monday and Thursday. Please come dressed in PE kit on those days. This term's sport is-
Tennis

At Longcot and Fernham CE Primary School, we want our pupils to love learning and be excited, passionate and challenged by our deep, rich curriculum.

Welcome to Summer Term 1 in Nightingale Class

Dear Parents/Carers, we hope you had an enjoyable Easter break.

I am looking forward to another fantastic term ahead in Nightingale class- full of exciting learning opportunities. Please contact me if you have any questions about this term's learning.



History

Our unit this term is:
Steam and the Railway (Brunel)

We will be learning about the first trains and railways link with the most iconic steam trains of Britain. Exploring how railway network in Britain grew and spread over time and its impact. Studying Isambard Brunel as a pioneering Victorian engineer.

Art/DT

- *Painting
- *Systems

Music

Composition
Create a structured composition

Maths

We will be learning:

Fractions: securing their knowledge skills.

Year 3 Money: Count, add, and subtract, including converting between pounds and pence.

Year 2 Time: telling the time

Writing

We will be learning about:

*Third person narrative-
animal stories

*Non-chronological reports

RE

We will be considering the Big question: In what ways is the synagogue important to Jewish people?

Spanish

Minibeasts
(las minibestias)

Science

Our unit focus is:

Plants

We will learn to identify and describe the functions of different parts of flowering plants. Also, the requirements of plants for life and growth link with the cycle of flowering plants, including pollination, seed formation and seed dispersal.

Computing

Technology:

Technology Around Us
Connect: Online Safety

PSHE

Relationships

To build healthy friendships, making others feel part of a group, caring for them and treating them with respect.